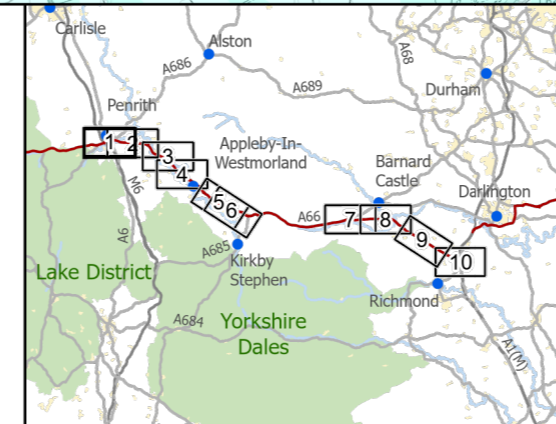


- Route Alignment
- Existing A66
- Order Limits
- - - Study Area 2000m
- LIDAR and OS enclosed depressions (m) - 2km boundary
- 0.011 - 0.1
- 0.101 - 1
- 1.001 - 2
- 2.001 - 19.39
- BGS 1:50k Bedrock
- Alston Formation - Mudstone Sandstone and Siltstone
- Alston Formation - Sandstone

- Belah Dolomite
- Brockram Breccia
- Crag Limestone
- Eden Shales
- Evaporite - Gypsum
- Four Fathom Limestone
- Great Limestone Member
- Little Limestone
- Penrith Sandstone
- St Bees Sandstone Member
- Stainmore Formation - Mudstone, Siltstone and Sandstone
- Three Yard Limestone



**national highways**

3 Piccadilly Place  
Manchester  
M1 3BN

P02	First Issue	CESL	LHAN	MBRE	AMIT	KWA
		29/03/22	29/03/22	29/03/22	26/04/22	26/04/22
Revision	Created	Checked	Reviewed	Approved	Authorised	

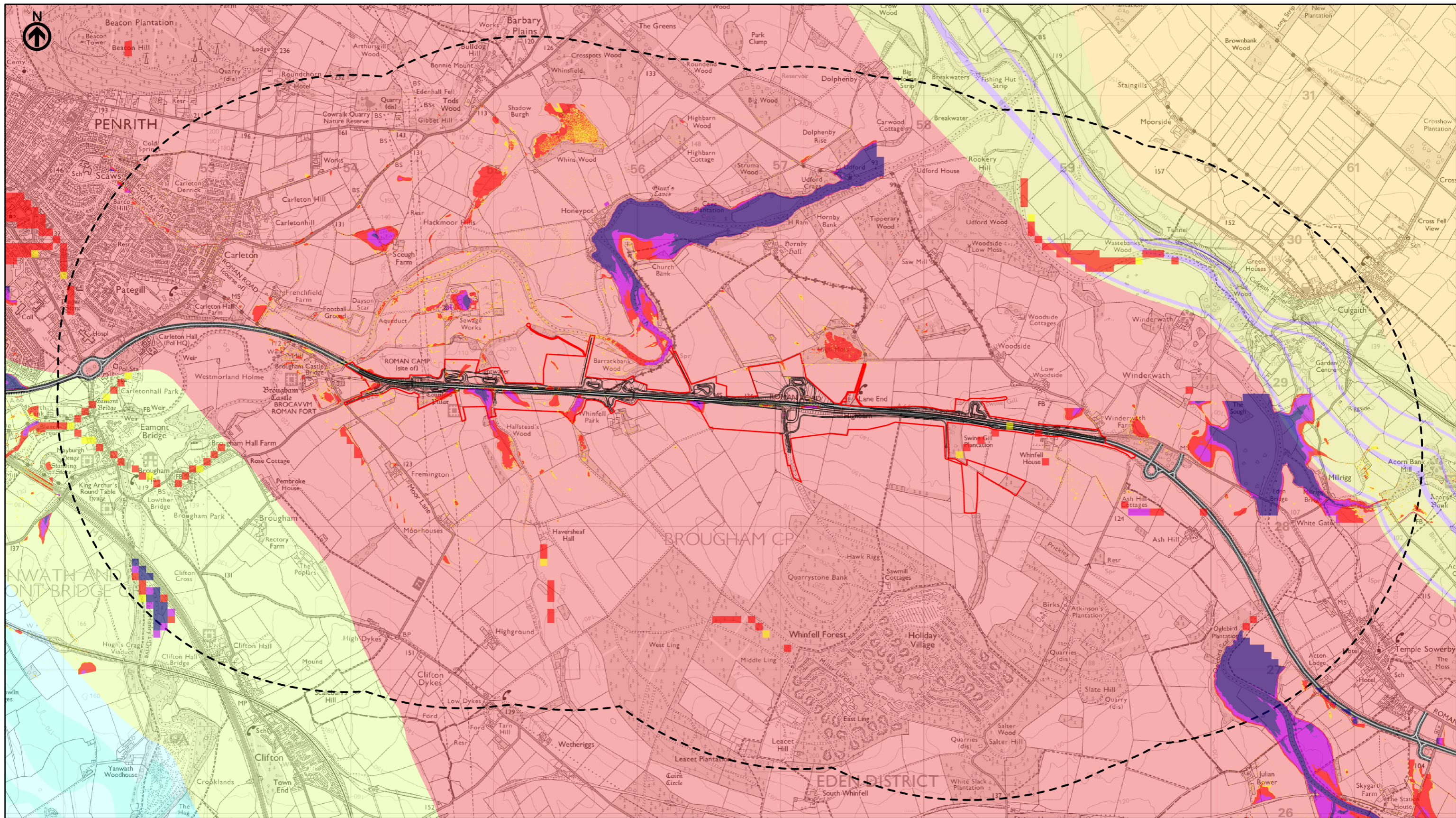
Kilometres

Scale @ A3: 1:25,000 | Project Ref No HE565627 | Stage: Stage 3

© Crown copyright and database rights (2022). All rights reserved. OS 100030649.  
Contains public sector information licensed under the Open Government Licence  
Contains British Geological Survey materials © UKRI 2022

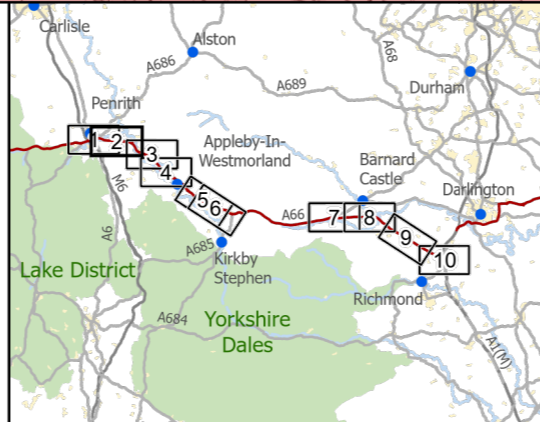
Project Name <b>A66 Northern Trans-Pennine Project</b>			
Map Title <b>Figure 14.8.4</b>			
LIDAR Enclosed Depressions			
Scheme: 0102, M6 Junction 40 to Kemplay Bank			
Sheet 1 of 10			
Map Number Project	Originator	Volume	
HE565627	AMY	EWE	
S00	MP	LD	011290
Location	Type	Role	Number
Suitability S4	Suitability Description FIT FOR STAGE APPROVAL		Revision P02





- Route Alignment
- Existing A66
- Order Limits
- Study Area 2000m
- LIDAR and OS enclosed depressions (m) - 2km boundary
- 0.011 - 0.1
- 0.101 - 1
- 1.001 - 2
- 2.001 - 19.39
- BGS 1:50k Bedrock
- Alston Formation - Mudstone Sandstone and Siltstone
- Alston Formation - Sandstone

- Belah Dolomite
- Brockram Breccia
- Crag Limestone
- Eden Shales
- Evaporite - Gypsum
- Four Fathom Limestone
- Great Limestone Member
- Little Limestone
- Penrith Sandstone
- St Bees Sandstone Member
- Stainmore Formation - Mudstone, Siltstone and Sandstone
- Three Yard Limestone



**national highways**

3 Piccadilly Place  
Manchester  
M1 3BN

P02	First Issue				
	CESL	LHAN	MBRE	AMIT	KWHA
	29/03/22	29/03/22	29/03/22	26/04/22	26/04/22
Revision	Created	Checked	Reviewed	Approved	Authorised

Kilometres

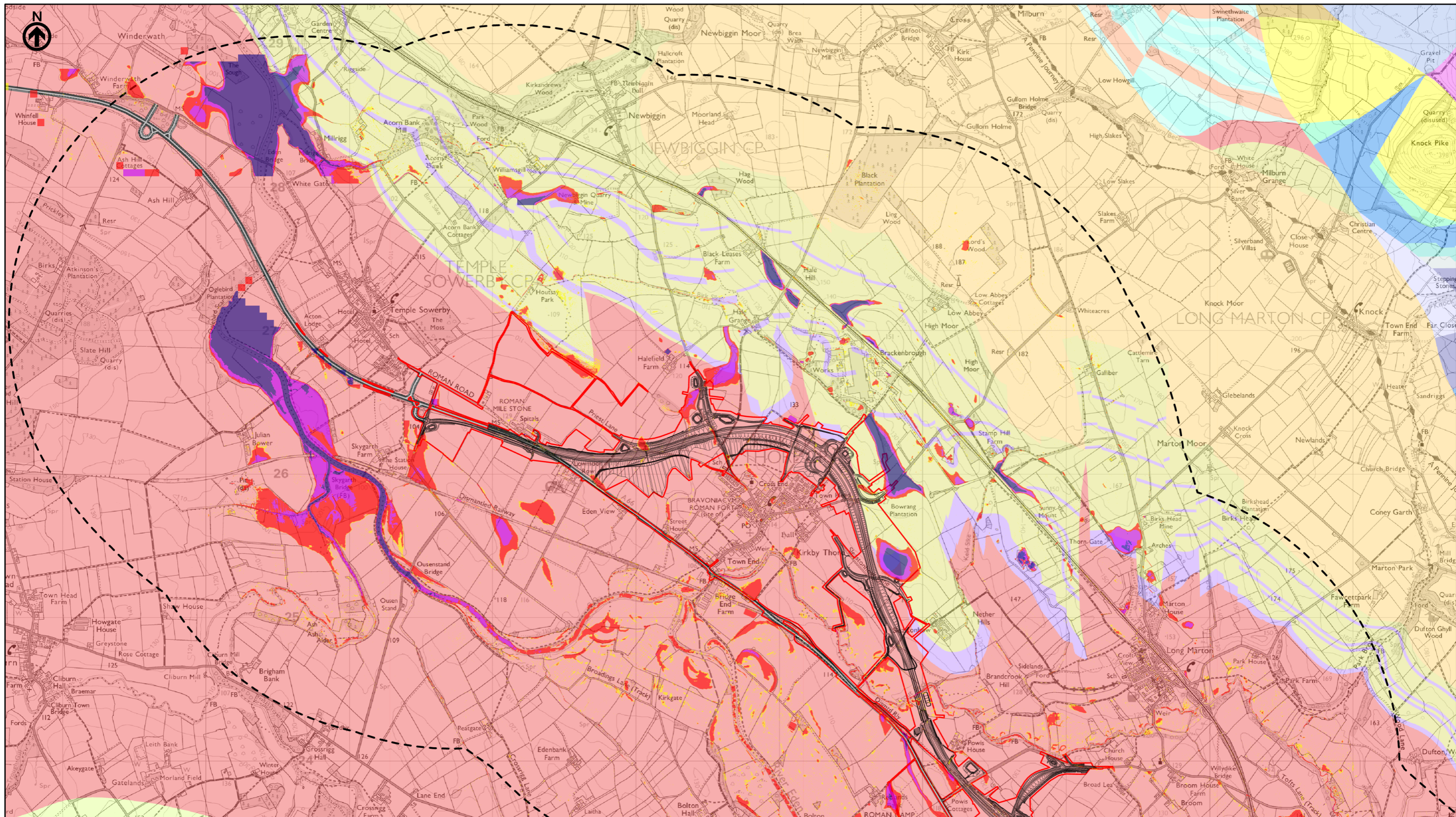
0 1 2

Scale @ A3: 1:25,000 | Project Ref No HE565627 | Stage: Stage 3

© Crown copyright and database rights (2022). All rights reserved. OS 100030649.  
Contains public sector information licensed under the Open Government Licence  
Contains British Geological Survey materials © UKRI 2022

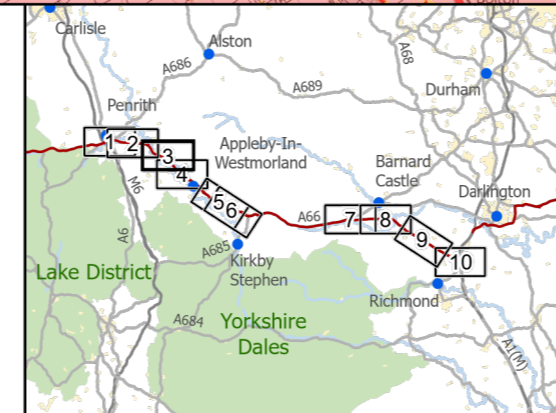
Project Name <b>A66 Northern Trans-Pennine Project</b>			
Map Title <b>Figure 14.8.4</b>			
LIDAR Enclosed Depressions			
Scheme: 03, Penrith to Temple Sowerby			
Sheet 2 of 10			
Map Number Project	Originator	Volume	
HE565627	AMY	EWE	
S00	MP	LD	011291
Location	Type	Role	Number
Suitability S4	Suitability Description FIT FOR STAGE APPROVAL		Revision P02





- Route Alignment
- Existing A66
- Order Limits
- Study Area 2000m
- LIDAR and OS enclosed depressions (m) - 2km boundary
- 0.011 - 0.1
- 0.101 - 1
- 1.001 - 2
- 2.001 - 19.39
- BGS 1:50k Bedrock
- Alston Formation - Mudstone Sandstone and Siltstone
- Alston Formation - Sandstone

- Belah Dolomite
- Brockram Breccia
- Crag Limestone
- Eden Shales
- Evaporite - Gypsum
- Four Fathom Limestone
- Great Limestone Member
- Little Limestone
- Penrith Sandstone
- St Bees Sandstone Member
- Stainmore Formation - Mudstone, Siltstone and Sandstone
- Three Yard Limestone



**national highways**

3 Piccadilly Place  
Manchester  
M1 3BN

P02	First Issue				
	CESL	LHAN	MBRE	AMIT	KWHA
	29/03/22	29/03/22	29/03/22	26/04/22	26/04/22
Revision	Created	Checked	Reviewed	Approved	Authorised

Kilometres

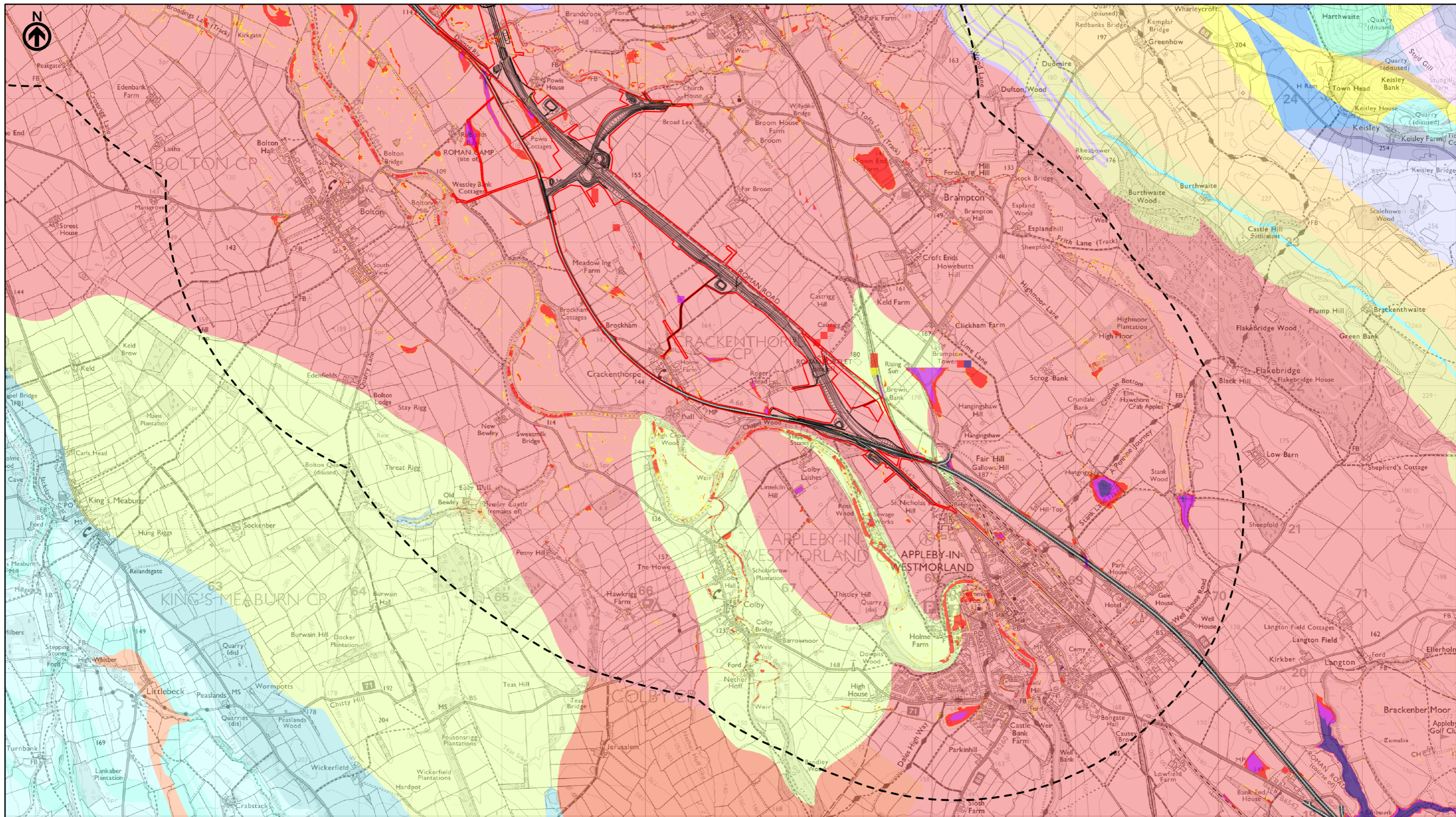
0 1 2

Scale @ A3: 1:25,000 | Project Ref No HE565627 | Stage: Stage 3

© Crown copyright and database rights (2022). All rights reserved. OS 100030649.  
Contains public sector information licensed under the Open Government Licence  
Contains British Geological Survey materials © UKRI 2022

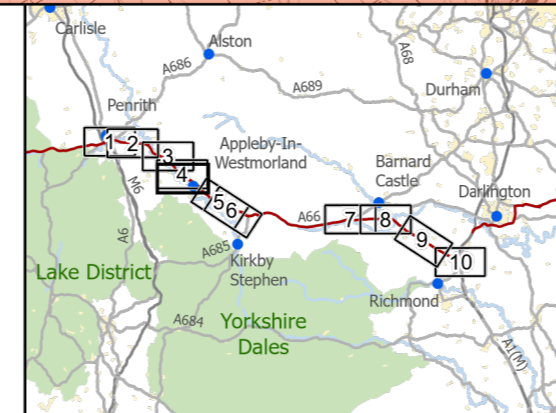
Project Name <b>A66 Northern Trans-Pennine Project</b>			
Map Title <b>Figure 14.8.4</b>			
LIDAR Enclosed Depressions			
Scheme: 0405, Temple Sowerby to Appleby			
Sheet 3 of 10			
Map Number Project	Originator	Volume	
HE565627	AMY	EWE	
S00	MP	LD	011292
Location	Type	Role	Number
Suitability S4	Suitability Description FIT FOR STAGE APPROVAL		Revision P02





- Route Alignment
- Existing A66
- ▭ Order Limits
- ▭ Study Area 2000m
- LIDAR and OS enclosed depressions (m) - 2km boundary
- 0.011 - 0.1
- 0.101 - 1
- 1.001 - 2
- 2.001 - 19.39
- BGS 1:50k Bedrock
- Alston Formation - Mudstone Sandstone and Siltstone
- Alston Formation - Sandstone

- Belah Dolomite
- Brockram Breccia
- Crag Limestone
- Eden Shales
- Evaporite - Gypsum
- Four Fathom Limestone
- Great Limestone Member
- Little Limestone
- Penrith Sandstone
- St Bees Sandstone Member
- Stainmore Formation - Mudstone, Siltstone and Sandstone
- Three Yard Limestone



**national highways** 3 Piccadilly Place  
Manchester M1 3BN

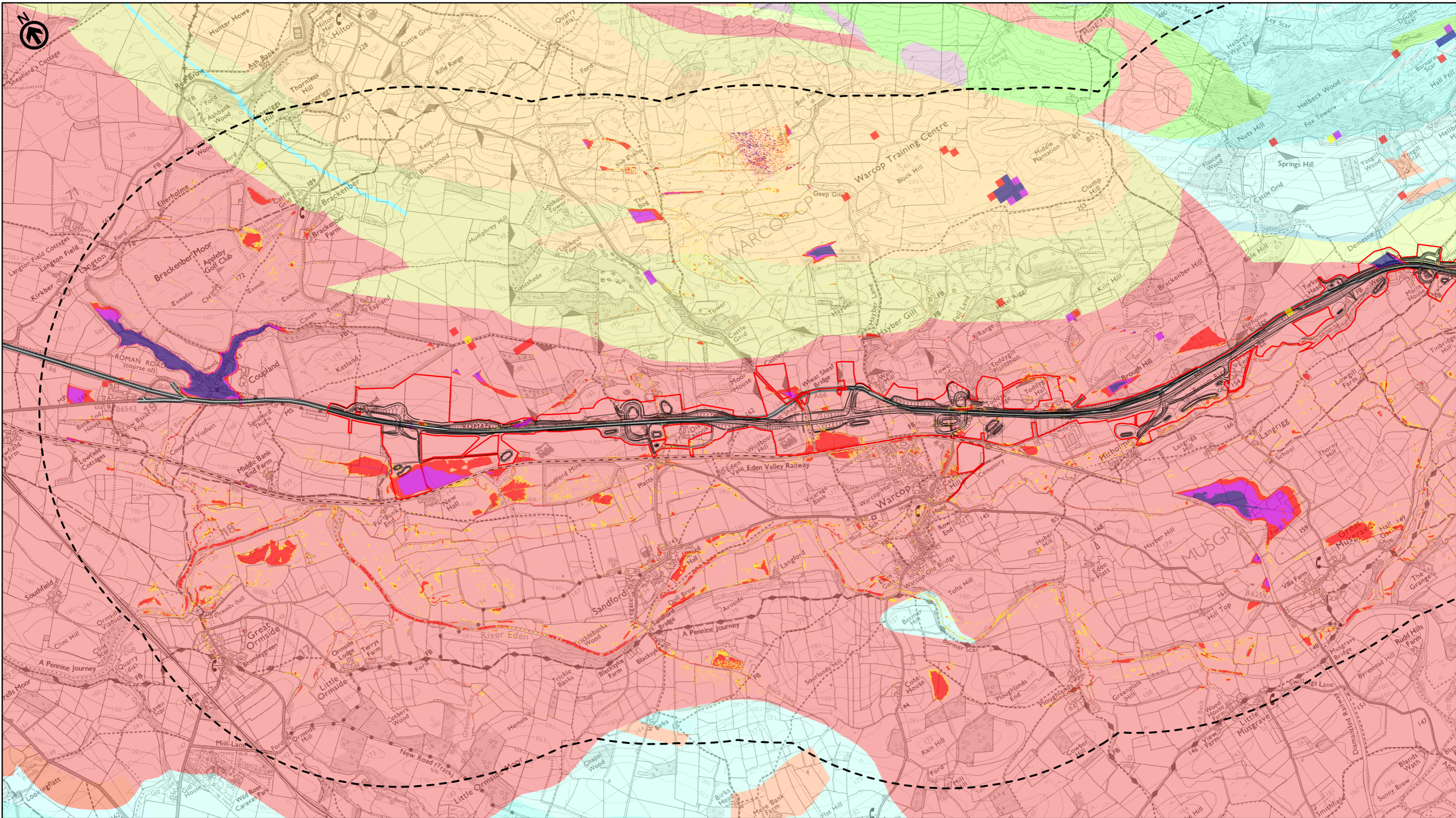
P02	First Issue				
	CESL	LHAN	MBRE	AMIT	KWHA
	29/03/22	29/03/22	29/03/22	26/04/22	26/04/22
Revision	Created	Checked	Reviewed	Approved	Authorised

Kilometres  
0 1 2

Scale @ A3: 1:25,000 | Project Ref No HE565627 | Stage: Stage 3  
© Crown copyright and database rights (2022). All rights reserved. OS 100030649.  
Contains public sector information licensed under the Open Government Licence  
Contains British Geological Survey materials © UKRI 2022

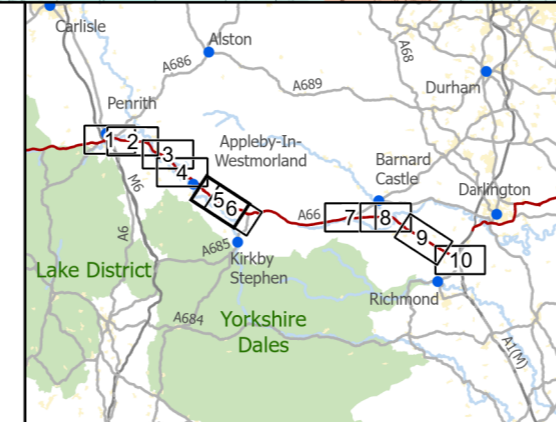
Project Name <b>A66 Northern Trans-Pennine Project</b>			
Map Title <b>Figure 14.8.4</b>			
LIDAR Enclosed Depressions			
Scheme: 0405, Temple Sowerby to Appleby			
Sheet 4 of 10			
Map Number Project	Originator	Volume	
HE565627	AMY	EWE	
S00	-	MP - LD -	011293
Location	Type	Role	Number
Suitability S4	Suitability Description FIT FOR STAGE APPROVAL		Revision P02





- Route Alignment
- Existing A66
- ▭ Order Limits
- - - Study Area 2000m
- LIDAR and OS enclosed depressions (m) - 2km boundary
- 0.011 - 0.1
- 0.101 - 1
- 1.001 - 2
- 2.001 - 19.39
- BGS 1:50k Bedrock
- Alston Formation - Mudstone Sandstone and Siltstone
- Alston Formation - Sandstone

- Belah Dolomite
- Brockram Breccia
- Crag Limestone
- Eden Shales
- Evaporite - Gypsum
- Four Fathom Limestone
- Great Limestone Member
- Little Limestone
- Penrith Sandstone
- St Bees Sandstone Member
- Stainmore Formation - Mudstone, Siltstone and Sandstone
- Three Yard Limestone



**national highways**

3 Piccadilly Place  
Manchester  
M1 3BN

P03	Second Issue: Revised Order Limits				
	CESL	PKEL	BWIL	AMIT	KWHA
	19/04/23	19/04/23	19/04/23	16/05/23	16/05/23
Revision	Created	Checked	Reviewed	Approved	Authorised

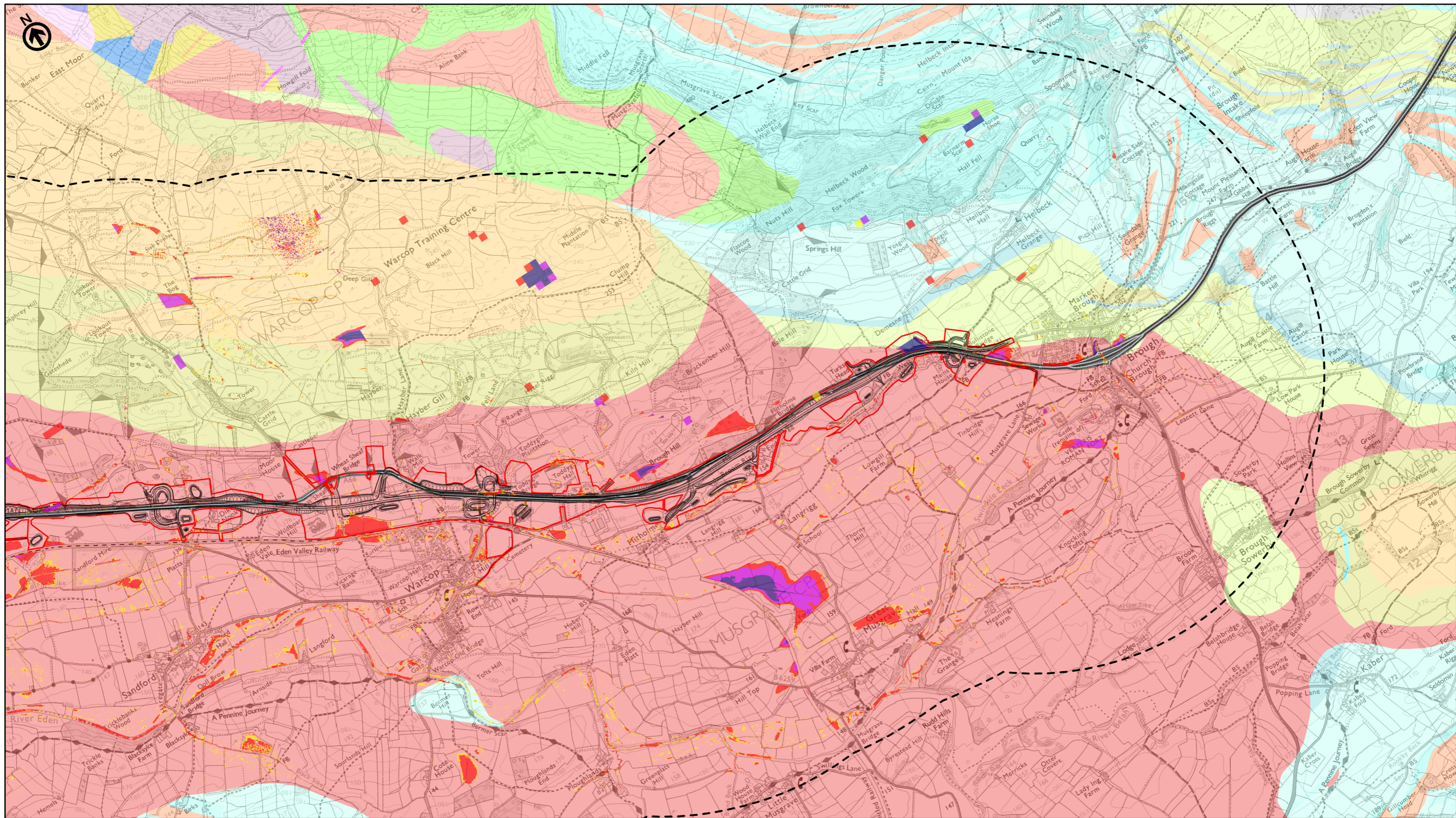
Kilometres

Scale @ A3: 1:25,000 | Project Ref No HE565627 | Stage: Stage 3

© Crown copyright and database rights (2023). All rights reserved. OS 100030649.  
Contains public sector information licensed under the Open Government Licence  
Contains British Geological Survey materials © UKRI 2022

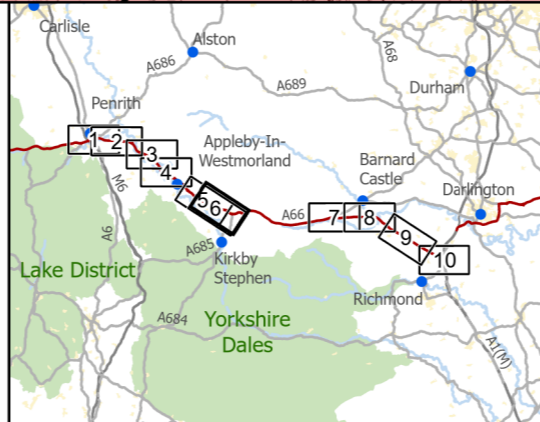
Project Name <b>A66 Northern Trans-Pennine Project</b>			
Map Title <b>Figure 14.8.4</b>			
LIDAR Enclosed Depressions			
Scheme: 06, Appleby to Brough			
Sheet 5 of 10			
Map Number Project	Originator	Volume	
HE565627	AMY	EWE	
S00	-	MP - LD -	011294
Location	Type	Role	Number
Suitability S4	Suitability Description FIT FOR STAGE APPROVAL		Revision P03





- Route Alignment
- Existing A66
- Order Limits
- Study Area 2000m
- LIDAR and OS enclosed depressions (m) - 2km boundary
- 0.011 - 0.1
- 0.101 - 1
- 1.001 - 2
- 2.001 - 19.39
- BGS 1:50k Bedrock
- Alston Formation - Mudstone Sandstone and Siltstone
- Alston Formation - Sandstone

- Belah Dolomite
- Brockram Breccia
- Crag Limestone
- Eden Shales
- Evaporite - Gypsum
- Four Fathom Limestone
- Great Limestone Member
- Little Limestone
- Penrith Sandstone
- St Bees Sandstone Member
- Stainmore Formation - Mudstone, Siltstone and Sandstone
- Three Yard Limestone



**national highways**

3 Piccadilly Place  
Manchester  
M1 3BN

P03	Second Issue: Revised Order Limits				
	CESL	PKEL	BWIL	AMIT	KWHA
	19/04/23	19/04/23	19/04/23	16/05/23	16/05/23
Revision	Created	Checked	Reviewed	Approved	Authorised

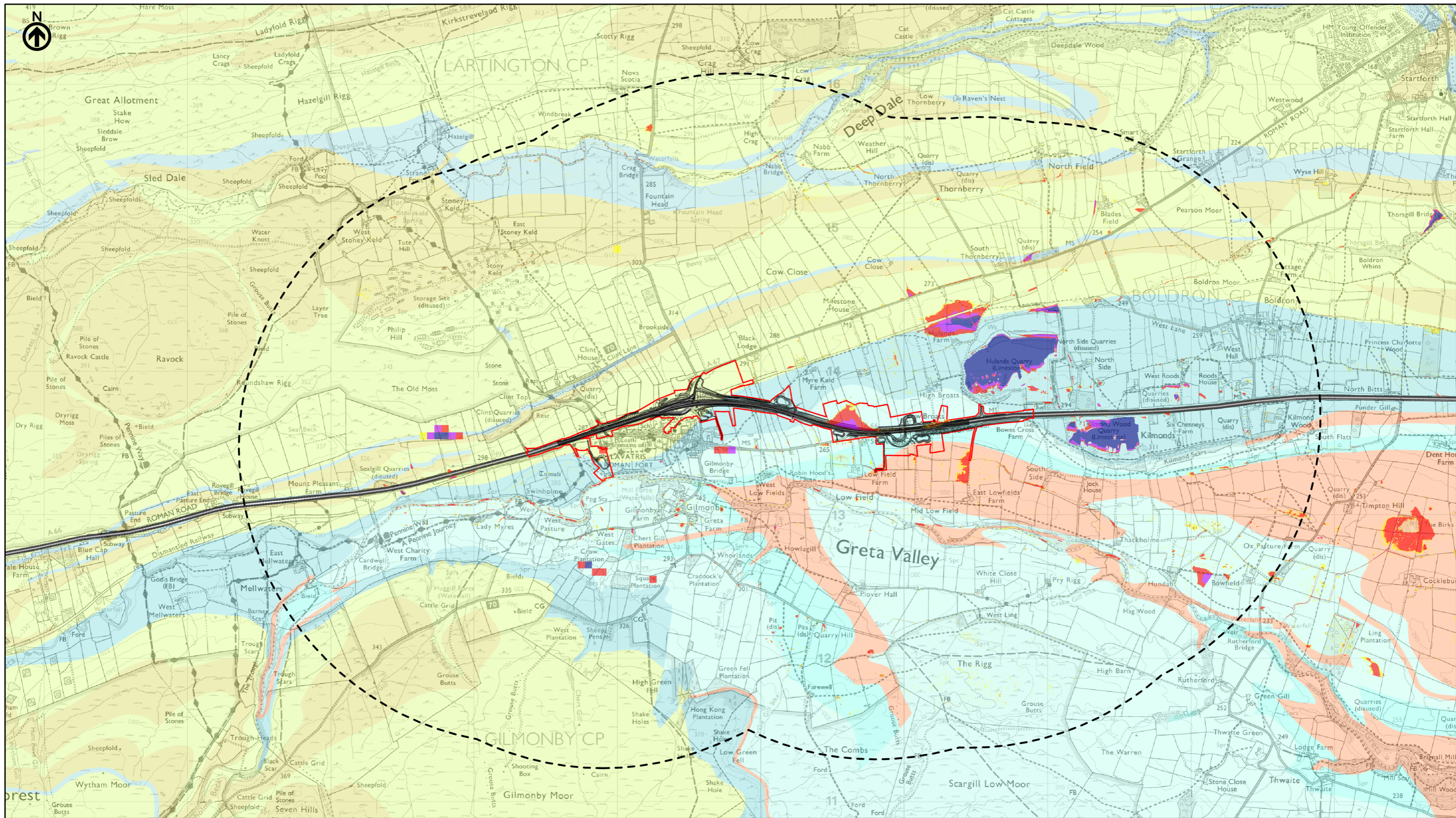
Kilometres

Scale @ A3: 1:25,000 | Project Ref No HE565627 | Stage: Stage 3

© Crown copyright and database rights (2023). All rights reserved. OS 100030649.  
Contains public sector information licensed under the Open Government Licence  
Contains British Geological Survey materials © UKRI 2022

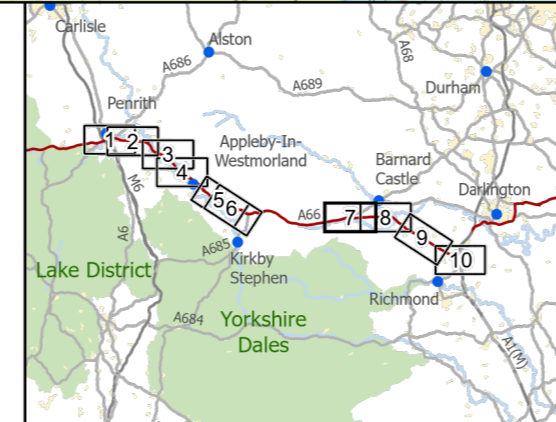
Project Name <b>A66 Northern Trans-Pennine Project</b>			
Map Title <b>Figure 14.8.4</b>			
LIDAR Enclosed Depressions			
Scheme: 06, Appleby to Brough			
Sheet 6 of 10			
Map Number Project	Originator	Volume	
HE565627	AMY	EWE	
S00 Location	MP	LD	011295
Suitability S4	Suitability Description FIT FOR STAGE APPROVAL		Revision P03





- Route Alignment
- Existing A66
- Order Limits
- Study Area 2000m
- LIDAR and OS enclosed depressions (m) - 2km boundary
- 0.011 - 0.1
- 0.101 - 1
- 1.001 - 2
- 2.001 - 19.39
- BGS 1:50k Bedrock
- Alston Formation - Mudstone Sandstone and Siltstone
- Alston Formation - Sandstone

- Belah Dolomite
- Brockram Breccia
- Crag Limestone
- Eden Shales
- Evaporite - Gypsum
- Four Fathom Limestone
- Great Limestone Member
- Little Limestone
- Penrith Sandstone
- St Bees Sandstone Member
- Stainmore Formation - Mudstone, Siltstone and Sandstone
- Three Yard Limestone



**national highways**

3 Piccadilly Place  
Manchester  
M1 3BN

P02	First Issue	CESL	LHAN	MBRE	AMIT	KWHA
		29/03/22	29/03/22	29/03/22	26/04/22	26/04/22
Revision	Created	Checked	Reviewed	Approved	Authorised	

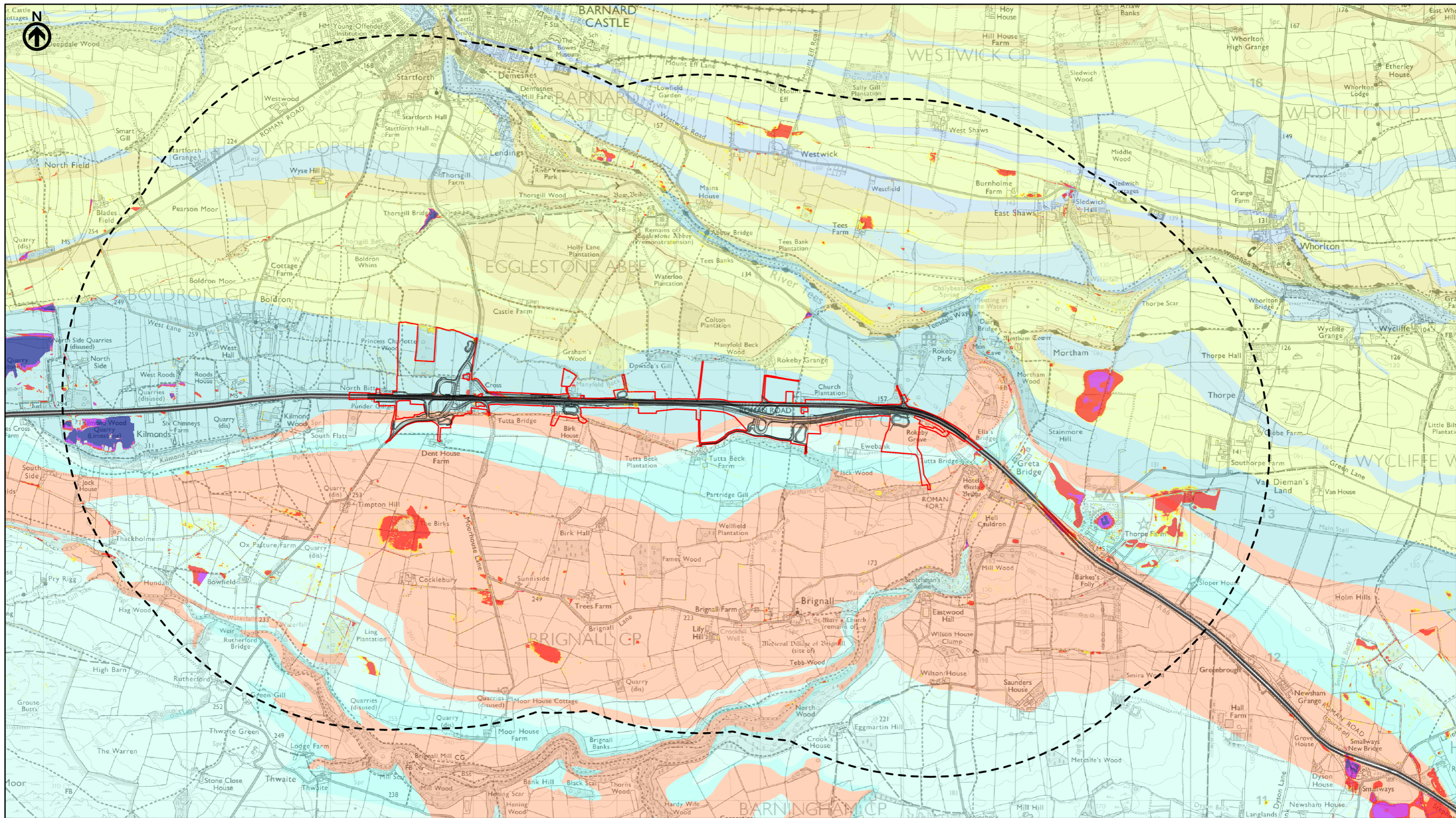
Kilometres

Scale @ A3: 1:25,000 | Project Ref No HE565627 | Stage: Stage 3

© Crown copyright and database rights (2022). All rights reserved. OS 100030649.  
Contains public sector information licensed under the Open Government Licence  
Contains British Geological Survey materials © UKRI 2022

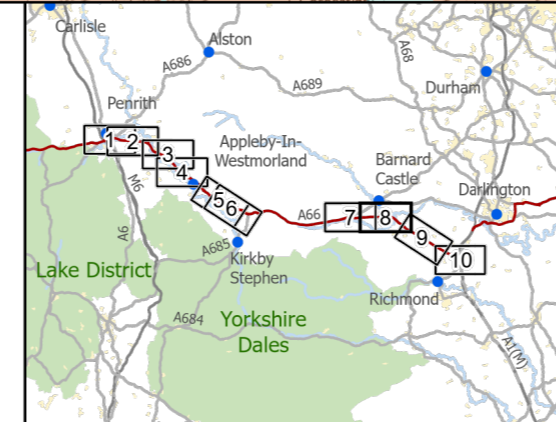
Project Name <b>A66 Northern Trans-Pennine Project</b>			
Map Title <b>Figure 14.8.4</b>			
Scheme: 07, Bowes Bypass			
Sheet 7 of 10			
Map Number Project	Originator	Volume	
HE565627	AMY	EWE	
S00	MP	LD	011296
Location	Type	Role	Number
Suitability S4	Suitability Description <b>FIT FOR STAGE APPROVAL</b>		Revision P02





- Route Alignment
- Existing A66
- Order Limits
- - - Study Area 2000m
- LIDAR and OS enclosed depressions (m) - 2km boundary
- 0.011 - 0.1
- 0.101 - 1
- 1.001 - 2
- 2.001 - 19.39
- BGS 1:50k Bedrock
- Alston Formation - Mudstone Sandstone and Siltstone
- Alston Formation - Sandstone

- Belah Dolomite
- Brockram Breccia
- Crag Limestone
- Eden Shales
- Evaporite - Gypsum
- Four Fathom Limestone
- Great Limestone Member
- Little Limestone
- Penrith Sandstone
- St Bees Sandstone Member
- Stainmore Formation - Mudstone, Siltstone and Sandstone
- Three Yard Limestone



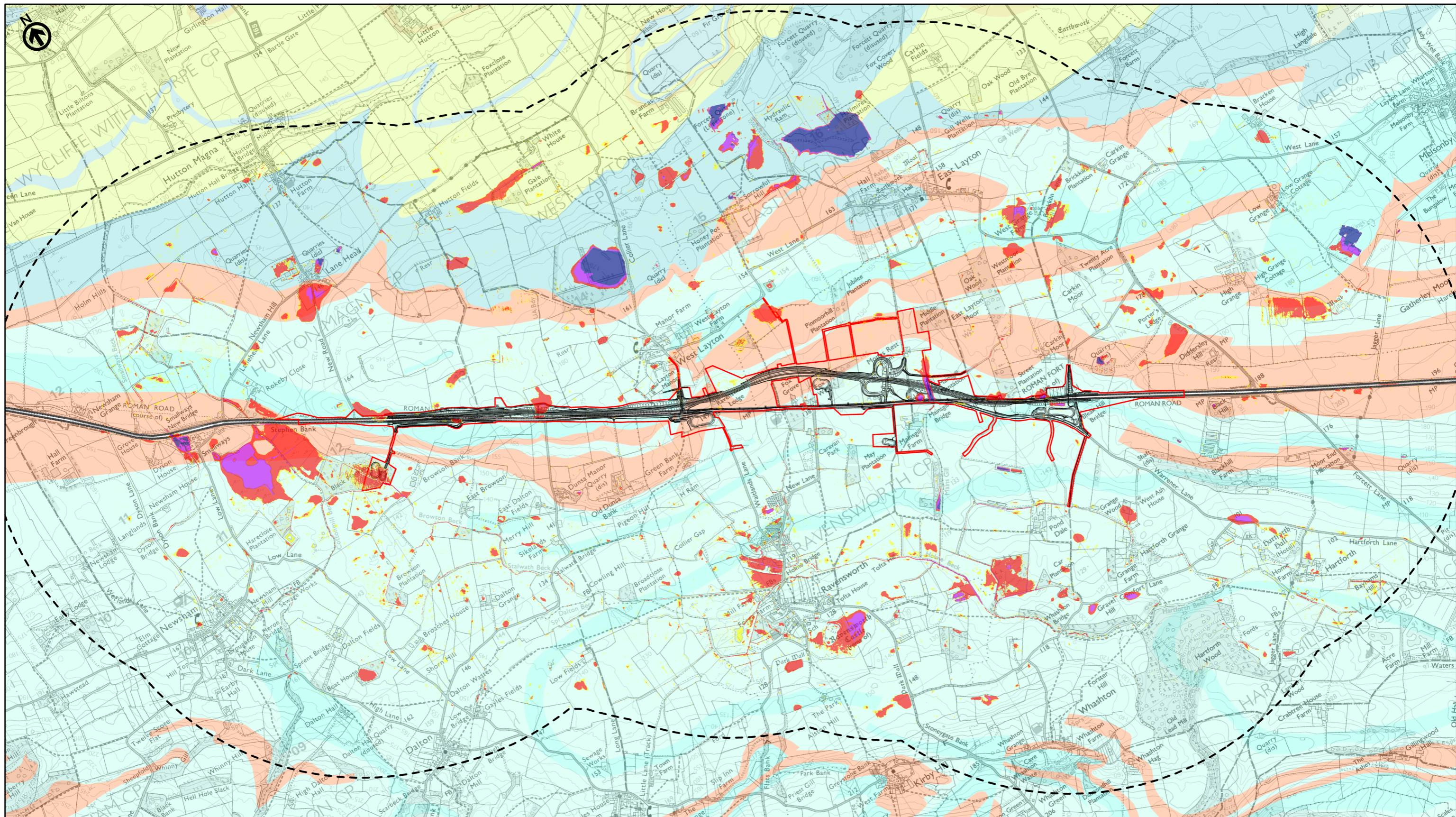
**national highways** 3 Piccadilly Place  
Manchester M1 3BN

P02	First Issue	CESL	LHAN	MBRE	AMIT	KWHA
	Created	29/03/22	29/03/22	29/03/22	26/04/22	26/04/22
Revision	Created	Checked	Reviewed	Approved	Authorised	

Scale @ A3: 1:25,000 | Project Ref No HE565627 | Stage: Stage 3  
 © Crown copyright and database rights (2022). All rights reserved. OS 100030649.  
 Contains public sector information licensed under the Open Government Licence  
 Contains British Geological Survey materials © UKRI 2022

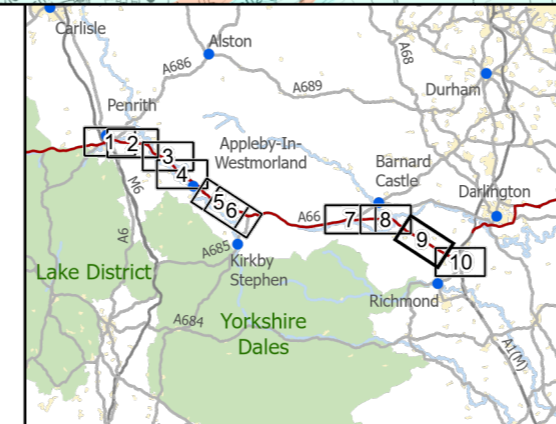
Project Name <b>A66 Northern Trans-Pennine Project</b>			
Map Title <b>Figure 14.8.4</b>			
LIDAR Enclosed Depressions			
Scheme: 08, Cross Lanes to Rokeby			
Sheet 8 of 10			
Map Number	Project	Originator	Volume
HE565627	-	AMY	- EWE
S00	-	MP - LD	- 011297
Location		Type	Role
Suitability	S4	Location Description	Revision
		<b>FIT FOR STAGE APPROVAL</b>	P02





- Route Alignment
- Existing A66
- ▭ Order Limits
- - - Study Area 2000m
- LIDAR and OS enclosed depressions (m) - 2km boundary
- 0.011 - 0.1
- 0.101 - 1
- 1.001 - 2
- 2.001 - 19.39
- BGS 1:50k Bedrock
- Alston Formation - Mudstone Sandstone and Siltstone
- Alston Formation - Sandstone

- Belah Dolomite
- Brockram Breccia
- Crag Limestone
- Eden Shales
- Evaporite - Gypsum
- Four Fathom Limestone
- Great Limestone Member
- Little Limestone
- Penrith Sandstone
- St Bees Sandstone Member
- Stainmore Formation - Mudstone, Siltstone and Sandstone
- Three Yard Limestone



**national highways**

3 Piccadilly Place  
Manchester  
M1 3BN

P02	First Issue				
	CESL	LHAN	MBRE	AMIT	KWHA
	29/03/22	29/03/22	29/03/22	26/04/22	26/04/22
Revision	Created	Checked	Reviewed	Approved	Authorised

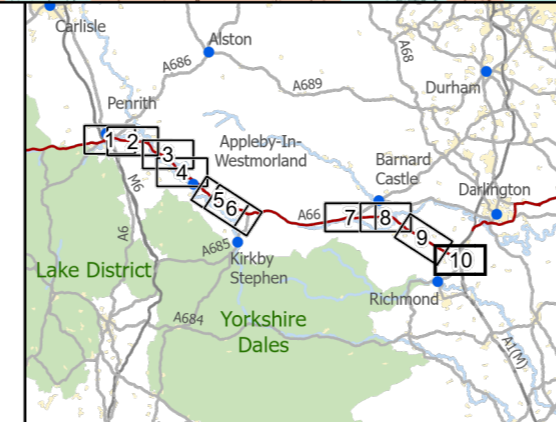
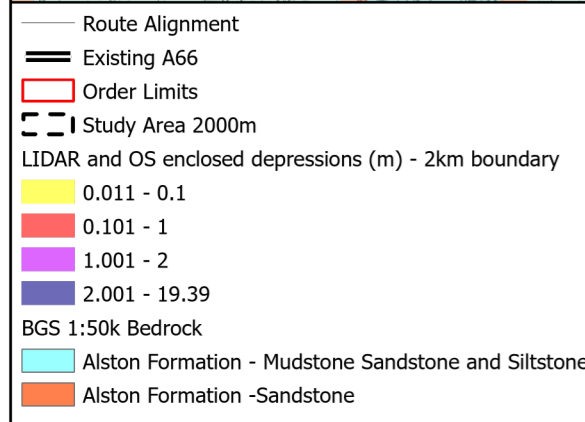
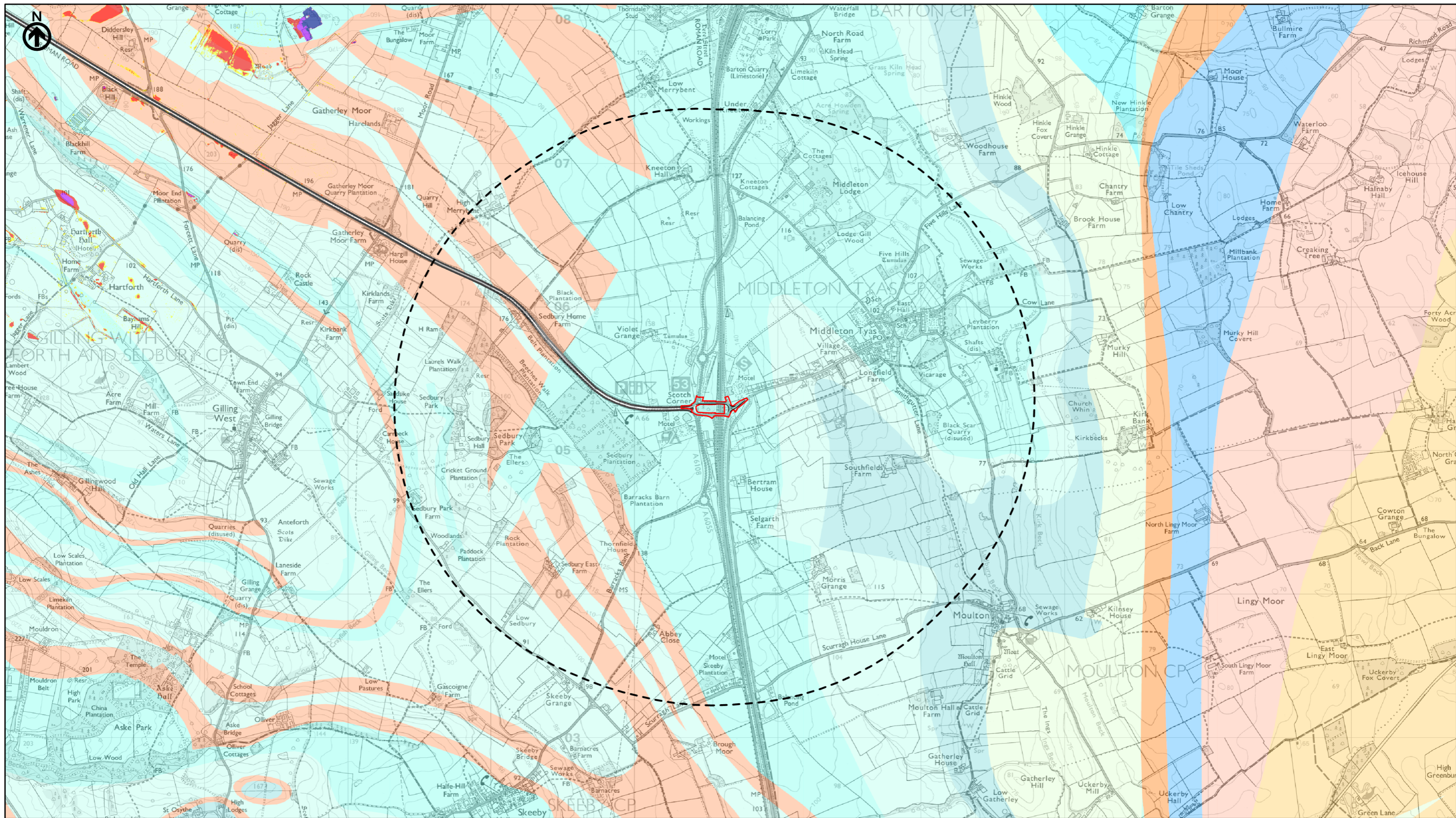
Kilometres

Scale @ A3: 1:25,000 | Project Ref No HE565627 | Stage: Stage 3

© Crown copyright and database rights (2022). All rights reserved. OS 100030649.  
Contains public sector information licensed under the Open Government Licence  
Contains British Geological Survey materials © UKRI 2022

Project Name <b>A66 Northern Trans-Pennine Project</b>			
Map Title <b>Figure 14.8.4</b>			
LIDAR Enclosed Depressions <b>Scheme: 09, Stephen Bank to Carkin Moor</b>			
Sheet 9 of 10			
Map Number Project	Originator	Volume	
HE565627	AMY	EWE	
S00	-	MP - LD -	011298
Location	Type	Role	Number
Suitability S4	Suitability Description FIT FOR STAGE APPROVAL		Revision P02





**national highways**  
 3 Piccadilly Place  
 Manchester  
 M1 3BN

P02	First Issue				
	CESL	LHAN	MBRE	AMIT	KWHA
	29/03/22	29/03/22	29/03/22	26/04/22	26/04/22
Revision	Created	Checked	Reviewed	Approved	Authorised

Kilometres  
 0 1 2

Scale @ A3: 1:25,000 | Project Ref No HE565627 | Stage: Stage 3  
 © Crown copyright and database rights (2022). All rights reserved. OS 100030649.  
 Contains public sector information licensed under the Open Government Licence  
 Contains British Geological Survey materials © UKRI 2022

Project Name <b>A66 Northern Trans-Pennine Project</b>			
Map Title <b>Figure 14.8.4</b>			
LIDAR Enclosed Depressions <b>Scheme: 11, A1(M) Junction 53 Scotch Corner</b>			
Sheet 10 of 10			
Map Number Project	Originator	Volume	
HE565627	AMY	EWE	
S00 Location	MP	LD	011299
	Type	Role	Number
Suitability S4	Suitability Description FIT FOR STAGE APPROVAL		Revision P02